

Strategic Healthcare Investment for Transformation (SHIFT)

Advancing behavioral health in Oregon



CareOregon’s **Strategic Healthcare Investment for Transformation (SHIFT)** initiative is a new investment in transforming behavioral health organizations across Oregon so that people with behavioral health needs are truly at the center of care delivery, and care teams thrive. Through a collaborative process, SHIFT will build member-driven, outcomes-focused, team-based care models that reduce health inequities, assure timely access to care and prepare providers for advanced value-based payment models.

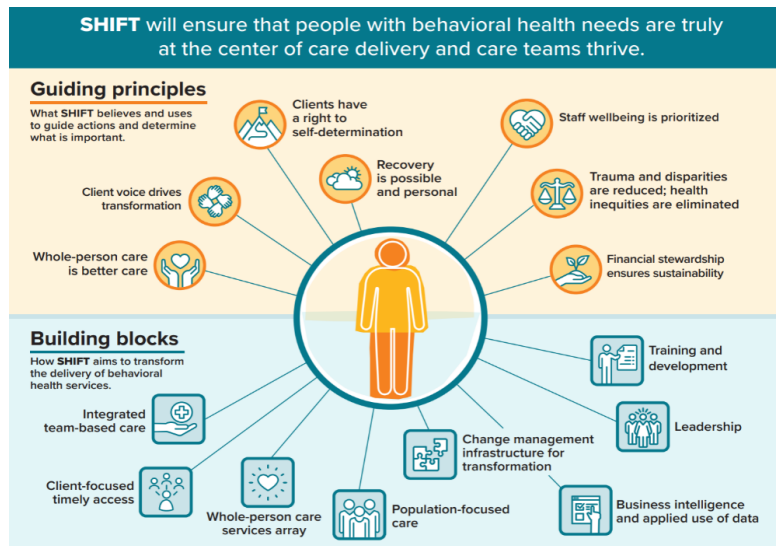
Why now?

CareOregon is committed to a vision where members in each of its regions have access to a high-performing behavioral health home. After decades of systemic underinvestment in behavioral health at the local, state and federal levels that have resulted in the significant capacity challenges and health inequities seen today, we are entering a new phase of opportunity for transforming behavioral health. New and significant financial investments are being made to shore up specialty behavioral health services, and we must capitalize on this opportunity to reimagine and transform the practice of care delivery.

SHIFT components

The SHIFT initiative will support clinical, financial and operational transformation by:

- Defining the principles and operational components (“Building Blocks”) of excellent outpatient behavioral health care, in collaboration with community stakeholders.
- Engaging six diverse behavioral health agencies and providing them with intensive technical and financial resources to implement the Building Blocks, learn what works, and accomplish the SHIFT first cohort goals.
- Pending the success of earlier stages, refining the initiative and expanding its reach to additional behavioral health agency across CareOregon’s networks.



What’s next?

Seven diverse behavioral health agencies have been selected to participate in this first SHIFT cohort, and we're excited to welcome the following agencies to the SHIFT community!

- | | | | | | |
|----------|---------------------------------|-----------------------|------------------------------------|---------------|------------|
| Cascadia | Clackamas County Health Centers | ColumbiaCare Services | Morrison Child and Family Services | New Narrative | VOA Oregon |
|----------|---------------------------------|-----------------------|------------------------------------|---------------|------------|

We look forward to sharing learnings and outcomes with you as we begin engagement with our first cohort through 2026. For more information, contact SHIFT@careoregon.org or visit www.careoregon.org/SHIFT.